

Project Management

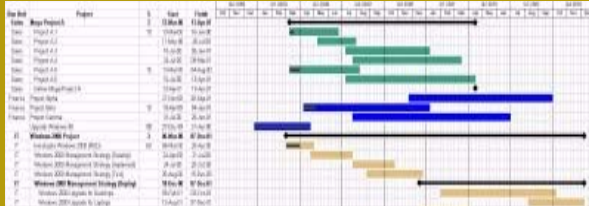
Project management refers to the definition, planning, and subsequent control and conclusion of a project. Pear Consulting recognizes that all projects need some level of project management. Managers are doing it today - even if it is in their head. Pear Consulting teaches managers how to manage projects using the Ten Step approach and a simplified training methodology to make project management effective and uncomplicated.



Phase 1: Plan the Work

Task 1. Define the Workplan

Task 2. Build the Workplan



All projects should spend time up-front in a definition step. For small projects, there is not much additional information needed, and therefore the planning process is short. As the projects become bigger and bigger, the need to fully understand what is being requested is more important, and gaining agreement on what is to be delivered is harder to define. Therefore, more time needs to be spent planning the work.

Phase 2: Work the Plan

Task 3. Manage the Workplan

Task 4. Manage Issues

Task 5. Manage Scope

Task 6. Manage Communication

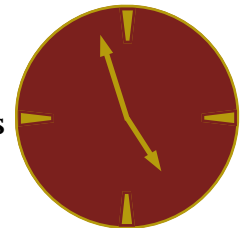
Task 7. Manage Risk

Task 8. Manage Documents

Task 9. Manage Quality

Task 10. Manage Metrics

Your project is going to face issues. Do you want to proactively resolve them or figure them out as you go? Your project will face potential risks. Do you want to try to resolve them before they happen, or wait until the problems arise? Are you going to communicate proactively or deal with conflict and uncertainty caused by lack of project information? Are you going to manage scope or deal with cost and deadline overruns caused by doing more work than your budget covers? Are you going to build quality into your process, or fix problems later when they will be more costly to resolve? Let Pear Consulting show you how to manage projects more efficiency.



Learn to manage using the Ten Step System

Pear Consulting

2040 S. Alma School Rd. suite 1 box 180
Chandler, AZ 85248-2075 USA

Telephone: (480) 275-5278
Fax: (480) 323-2482